

Access map to ENKRE



National School of Physiotherapy and Rehabilitation (ENKRE)

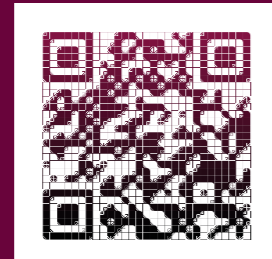
Hôpitaux de Saint-Maurice
12, rue du Val d'Osne
94410 Saint-Maurice

Tél. : 01 43 96 64 64
Fax : 01 43 96 64 07

enkre@ght94n.fr
secretariat@enkre.fr

www.hopitaux-saint-maurice.fr

Métro : ligne 8, station Charenton-Écoles
Bus : 24, 103, 111, 180, 325
Autoroute : A4, sortie Saint-Maurice



www.hopitaux-saint-maurice.fr/Presentation/2/142

Students association

The Physiotherapy students' association of the ENKRE is a non-profit association which offers, with the contributions of its partners, many services to the students and ENKRE alumni. One of its roles is to create cohesion between students through social events : cultural experiences, sports meetings, between-schools parties with other physiotherapy schools, solidarity events and tutoring and mentoring support between different classes.

president.stmo@gmail.com - [stmo.bde](https://www.facebook.com/stmo.bde)



Association des anciens de l'ENKRE, KEA :
contact@kealumni.fr
www.kealumni.fr

© Hôpitaux de Saint-Maurice - Mars 2023 - Photos : © Jacques Chervin - Illustration : rawpixel.com - fr.freepik.com

Understanding human movement, restoring it and choosing it as a health value





Presentation

Founded in 1968 with the aim to experiment new education methods and to improve physiotherapy training in France, the National School of Physiotherapy and Rehabilitation (**ENKRE**) is a public physiotherapy institute financed by the Regional Council of Ile de France. The school is managed by the Hospitals of Saint-Maurice. It is located close to Paris in the heart of this renowned establishment in the field of adult and child rehabilitation. It benefits from renovated premises in a historical setting and has a reference documentation center.

Each year, ENKRE welcomes about a hundred new first year students. Among of them, there are some "High Level Athletes", few overseas students already having a physiotherapist diploma and some extra students coming from other bridging programs.

The school offers optimal material conditions for training, proposes a **professionalization curriculum that is universalized** and is open to **international mobility**.

Since 2017, ENKRE has been integrated, on educational and scientific levels, into the **Department of Physiotherapy** (DUFK/P) of the Kremlin-Bicêtre Faculty of Medicine of the University of Paris-Saclay.

Students obtain the French State Diploma of Physiotherapy required to practice in both **France** and in the **European Union** after a validated first year of university studies and four years of professionalizing university studies, one third of which is spent in internships in France and abroad.

The decree n° 2021-1085 of August 13, 2021 conferred a master's degree the French State Diploma of Physiotherapy

The teaching staff is made up of highly qualified teachers from both the professional and academic fields. Six educational coordinators organize and manage the **initial and continuing education programs** supported by the school's project.



Professional integration of high levels athletes

ENKRE admits high level sports athletes through an agreement with the National Institute of Sports, Expert Evaluation and Performance ("Institut National du Sport, de l'Expertise et de la Performance" INSEP) and Sports Federations. Athletes can benefit from :

- A double project : a timetable arrangement in order to link professional studies and sports career.
- Professional career change at the end of the sports career.

Admissions

Since 2005-2006, the 1st year admission process in Physiotherapy is as follows : validation of 60 ECTS. Access to the training is organized on a selection basis after a validated first university year, either a first university academic year in Medical Science (PASS ou L-AS)" or a first year in Sciences and Techniques of Physical and Sports Activities (L1 STAPS), or by a first year in Life Sciences.

Selected students are ranked in merit order by each university.

The number of admissions for the September 2023 school year : **105 admissions**

- **admissions from the University of Paris Cite : 16 seats** divided into :
 - PASS: 16 seats
- **admissions from the University of Paris Saclay : 33 seats** divided into :
 - PASS (first university academic year in Medical Science) : 10 seats
 - First year undergraduate in STAPS (oriented towards physiotherapy) : 12 seats
 - First year undergraduate in BCST ou PCST (oriented towards physiotherapy or with a Health science minor) : 4 seats
 - Second year undergraduate in BCST ou PCST : 7 seats
- **admissions from the University of Paris Est Créteil (UPEC) : 22 seats** divided into :
 - First year undergraduate in Health Sciences : 10 seats
 - Second year undergraduate in Health Sciences : 2 seats
 - First year undergraduate in STAPS (oriented towards physiotherapy) : 10 seats
- **admissions from the University of Sorbonne Paris Nord : 17 seats** divided into :
 - PASS, LAS1, LAS2, LAS 2 STAPS or SdV or STS : 6 seats
 - First year undergraduate in STAPS (oriented towards physiotherapy) : 6 seats
 - First year undergraduate or Second year undergraduate in STS or Biology : 5 seats
- **admissions of high-level sports athletes : 10 seats** after a selection committee
- admissions of graduates from medical education, paramedical education, bachelors in STAPS and graduates with a Master's level State Diploma : **5 seats**
- admissions of graduates from outside the Europe Union : **2 seats**

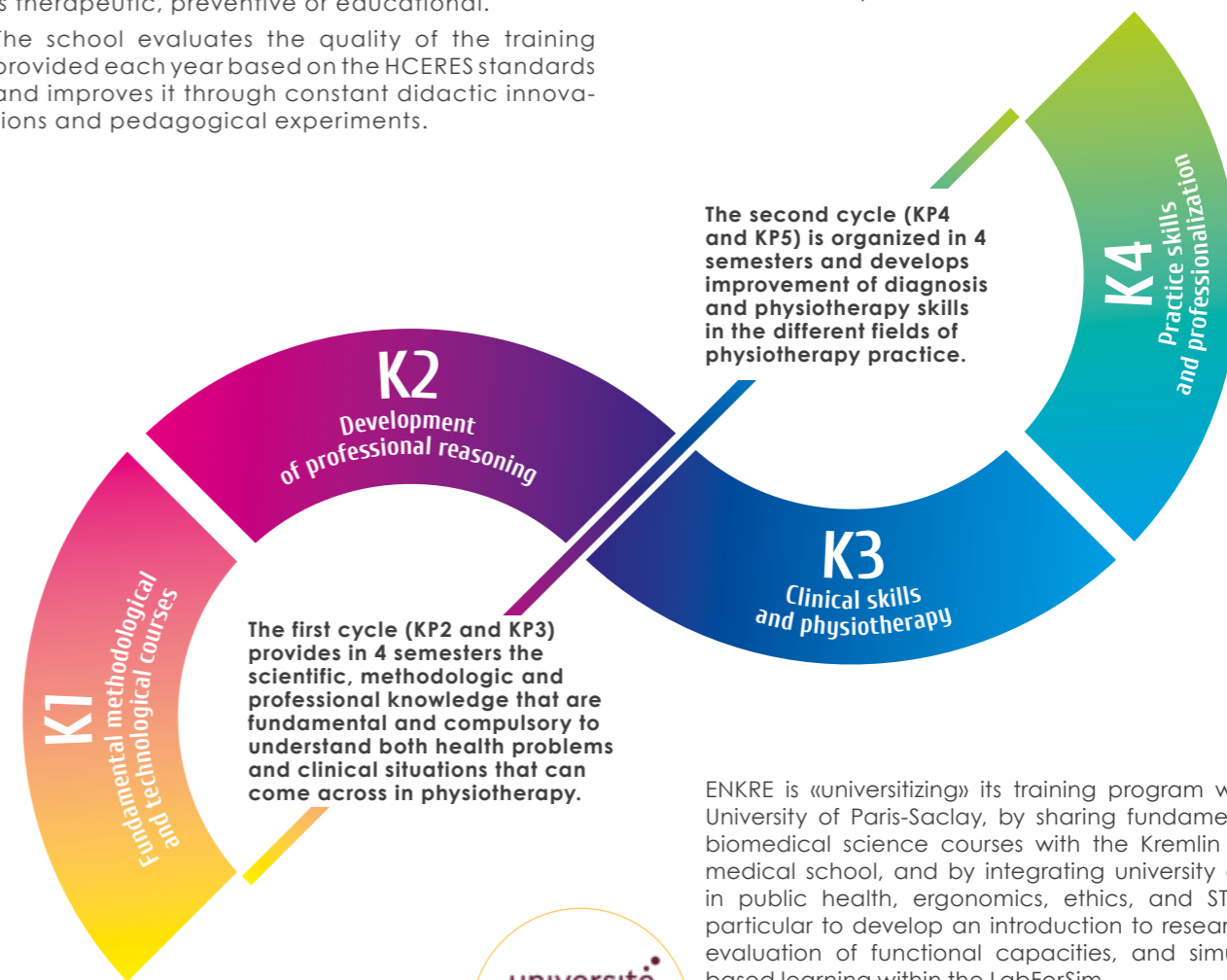
* ECTS : Européan Crédits Transfert System.
 1 Arrêté du 16 juin 2015 modifié le 31 décembre 2015 relatif à l'admission dans les instituts préparant au diplôme d'État de masseur-kinésithérapeute.



Development of professional skills

Physiotherapists must practice with competence and quality intervention in order to respond to health needs of a patient, at all stages of the illness and at all ages of his life, whether the intervention is therapeutic, preventive or educational.

The school evaluates the quality of the training provided each year based on the HCERES standards and improves it through constant didactic innovations and pedagogical experiments.



The first cycle (KP2 and KP3) provides in 4 semesters the scientific, methodologic and professional knowledge that are fundamental and compulsory to understand both health problems and clinical situations that can come across in physiotherapy.

4 years course duration of professional and university training

Training is organized and divided in two cycles, with rotations between university-based education and internships².

ENKRE is «universitizing» its training program with the University of Paris-Saclay, by sharing fundamentals in biomedical science courses with the Kremlin Bicêtre medical school, and by integrating university courses in public health, ergonomics, ethics, and STAPS, in particular to develop an introduction to research, the evaluation of functional capacities, and simulation-based learning within the LabForSim.

Further education

Since 2014, with the implementation of a process of universalization of physiotherapy training in partnership with the University of Paris-Saclay, students can earn a master's degree (300 ECTS) upon obtaining the State Diploma.

Possibilities of following a master's degree and pursuing a doctorate are set up with the Université Paris-Saclay and with partner universities.

² Décret n°251-1110 du 2 septembre 2015 relatif au diplôme d'État de masseur-kinésithérapeute.

Arrêté du 2 septembre 2015 relatif au diplôme d'État de masseur-kinésithérapeute (JORF n°0204 du 4 septembre 2015).

université PARIS-SACLAY
 FACULTÉ DE MÉDECINE